

# Water-Oriented Living Lab - NUoL

**Inow Asia** - Development of innovative multilevel formation programs for the new water leading professionals in South East Asia

Name of LL	Domestic Wastewater Solution Education
University Name + logo + Weblink to LL webpage (if any)	National University of Laos 
Contact person + email	Dr. Santi Kongmany, s.kongmany@nuol.edu.la
Main goal	To develop innovative solutions for domestic wastewater management.
Specific goals	<ol style="list-style-type: none"> <li>1. To educate young researchers on wastewater quality testing professions in Lab.</li> <li>2. To demonstrate a remote sensing system for online monitoring domestic wastewater quality.</li> <li>3. To co-create the collaboration among all stakeholders on domestic wastewater management.</li> </ol>
Keywords	Domestic Wastewater, Living Lab, Co-Creative Innovative Solution

# WoLL Equipment – NOUL



## Item 1: Petrifilm Plat Reader Advanced

Objective:

To analyze the total coliform, E. Coli. Coliform bacteria in domestic wastewater.

# WoLL Equipment – NOUL



## Item 2: BOD Analyzer

Objective:

To analyze the biochemical oxygen demand (BOD) of domestic wastewater.

# WoLL Equipment – NOUL

## Item 3: Multiparameter water quality portable meter



Objective:  
To measure the physical (Temp., EC, TDS) and chemical (pH, DO, Chloride, Nitrate, Ammonium) quality of domestic wastewater.

# WoLL Equipment – NOUL

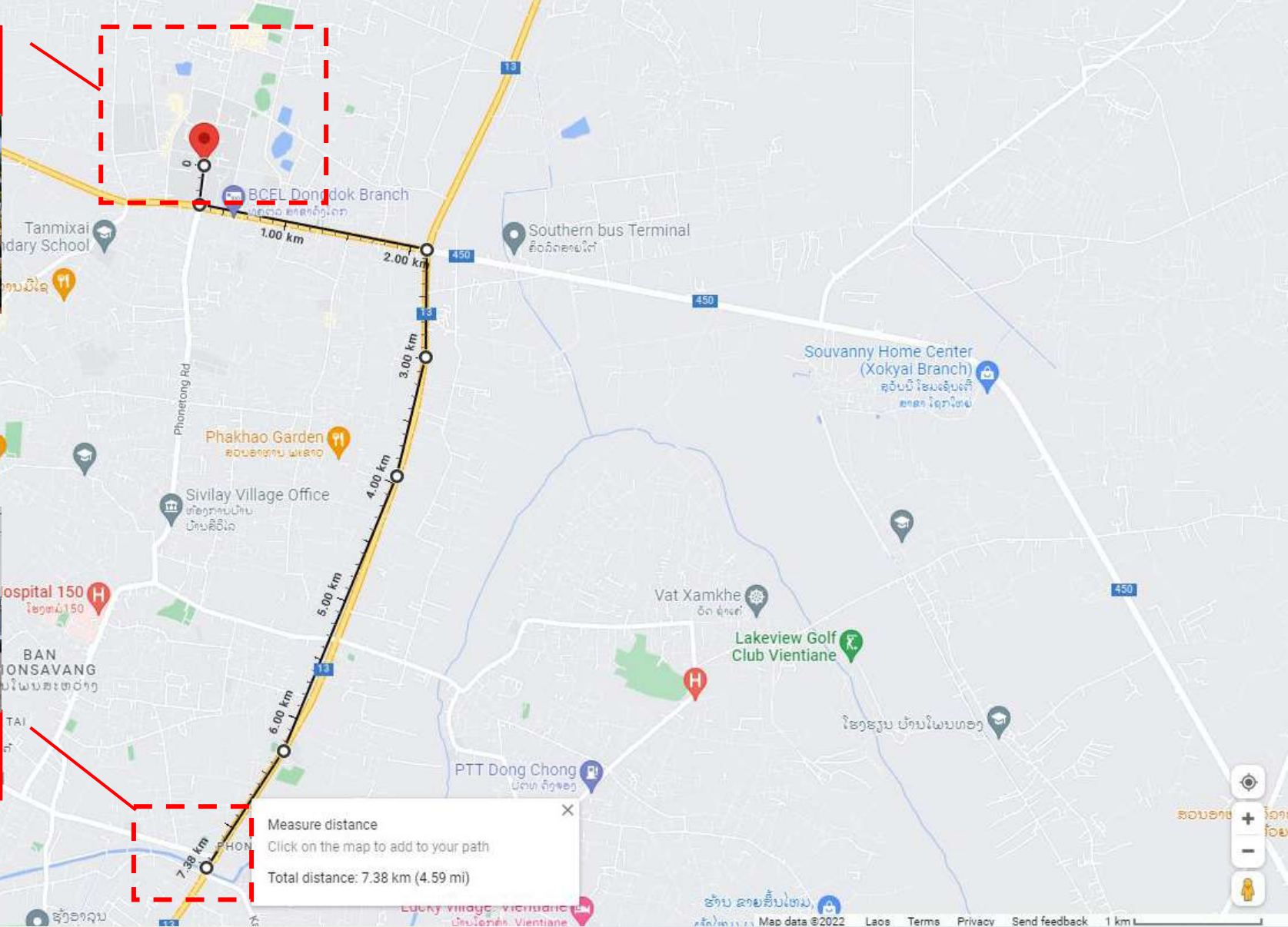
Item 4: Sensors and PC for Remote sensing of some water quality parameters of domestic water

Objective:

To control the sensors and data processing.



**NUoL  
Dongdok Campus**



**Hongxeng, Domestic  
Wastewater Canal**

<https://www.google.com/maps/place/National+University+of+Laos/@18.0185235,102.6334014,14z/data=!4m5!3m4!1s0x0:0xd933c8032521d049!8m2!3d18.0370502!4d102.6352338>

## Figures/pictures (2)



## Map including LL location

